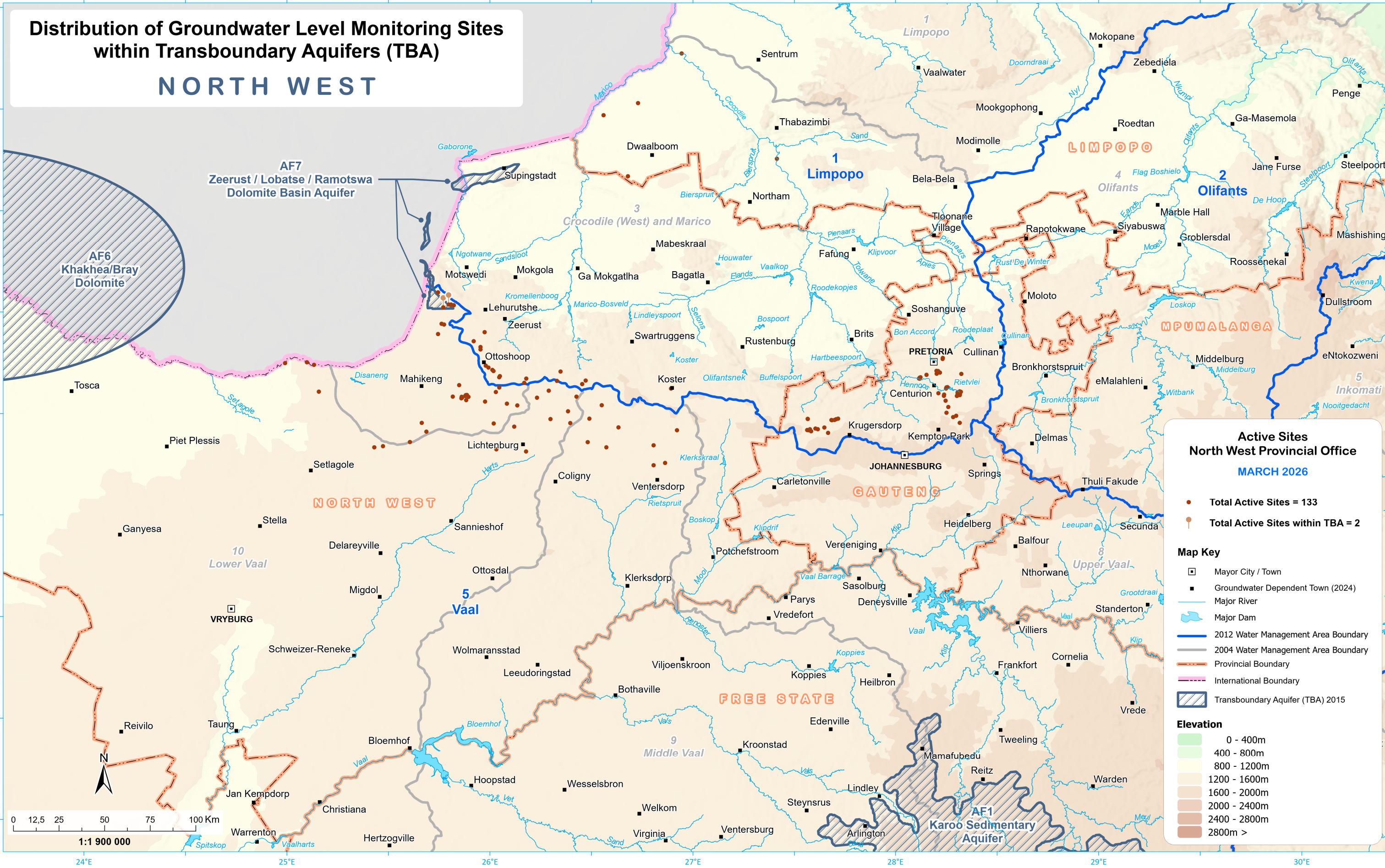


Distribution of Groundwater Level Monitoring Sites within Transboundary Aquifers (TBA)

NORTH WEST



Data Sources:
Towns, Elevation and International Boundaries - Department of Agriculture, Land Reform and Rural Development (DALRRD), Chief Directorate: National Geospatial Information (NGI); Groundwater data: Department of Water & Sanitation (DWS), Directorate National Hydrological Services. Hydstra Database. Transboundary Aquifers of the World [map]. Edition 2015. Delft, Netherlands: IGRAC (International Groundwater Resources Assessment Centre), 2015, UNESCO-IHP (UNESCO International Hydrological Programme), 2015.

Map produced by:
Department of Water & Sanitation: Directorate: Spatial Information (SI);
Sub-Directorate: Geographic Information and Archiving (GI&A) - Cartographic Services Unit.
Map Date: Mar 2026 (Task Ref: GM26_006)